



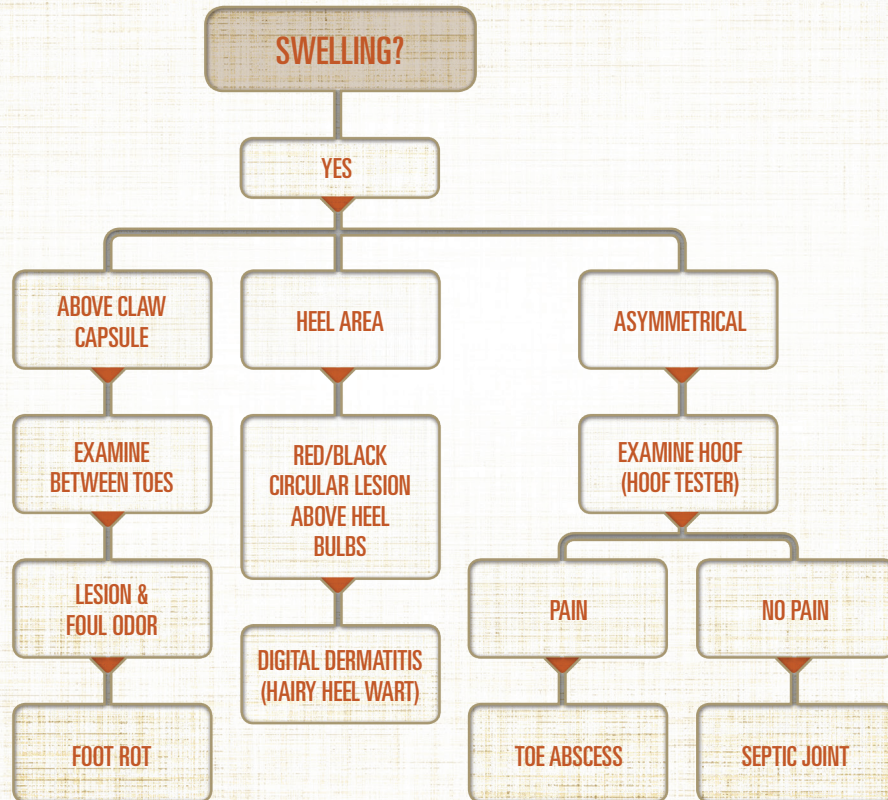
IDENTIFYING & MANAGING THE COMMON CAUSES OF BEEF CATTLE LAMENESS

This diagnostic guide was developed by Zinpro Corporation as part of the Step-Up™ Management Program to help identify the underlying causes of beef cattle lameness and recommend appropriate management.

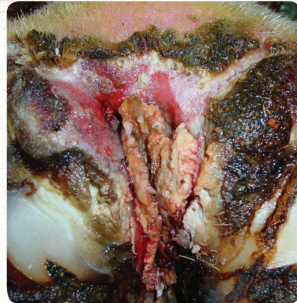
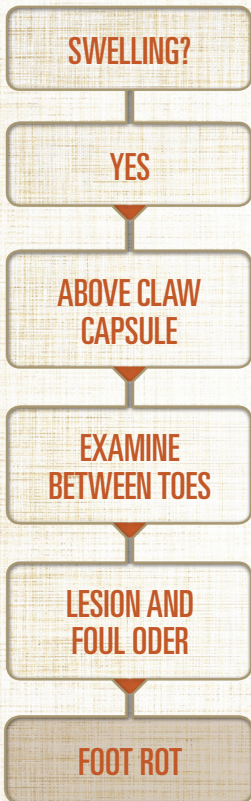
SWELLING?

YES

▶ SIMPLE DECISION TREE



▶ FOOT ROT



Foot Rot Management:

- Wash until clean
- Topical antiseptic
- Responds well to antibiotics approved for foot rot (consult veterinarian for correct antibiotic treatment)
- Proper pen maintenance
- Trace mineral fortification strategy

▶ DIGITAL DERMATITIS (HAIRY HEEL WART)



Digital Dermatitis Management:

- Topical antibiotics with loose bandaging
- Medicated paste
- Daily treatment with antibiotic sprays
- Well-managed footbaths
- Consult veterinarian
- Proper pen maintenance
- Trace mineral fortification strategy

▶ SEPTIC JOINT

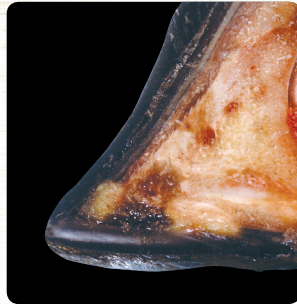


Septic Joint Management:

- Consult veterinarian
- No effective treatment
- Management and humane care

Asymmetrical
(no pain)

▶ TOE ABSCESS



Toe Abscess Management:

- Tip toe to drain abscess and relieve pressure
- Select long duration antibiotics (consult veterinarian)
- House in clean/dry environment
- Proper pen maintenance
- Trace mineral fortification strategy

Asymmetrical
(pain)

STEP  **P**™

FROM

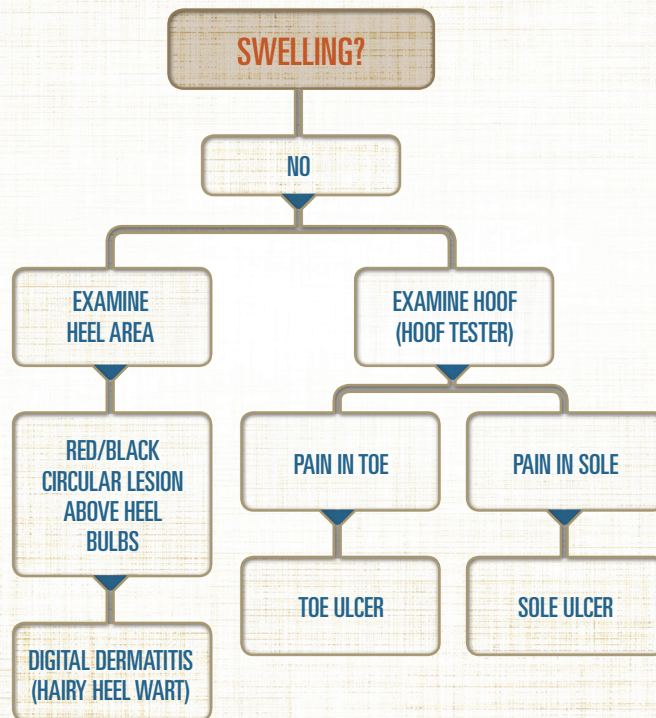


PERFORMANCE MINERALS®

SWELLING?

NO

▶ SIMPLE DECISION TREE



▶ DIGITAL DERMATITIS (HAIRY HEEL WART)

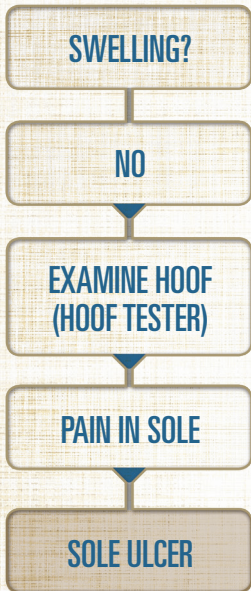


Digital Dermatitis Management:

- Topical antibiotics with loose bandaging
- Medicated paste
- Daily treatment with antibiotic sprays
- Well-managed footbaths
- Consult veterinarian
- Proper pen maintenance
- Trace mineral fortification strategy

Examine Heel Area

▶ SOLE ULCER

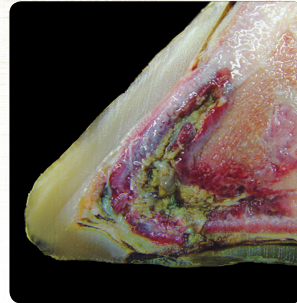
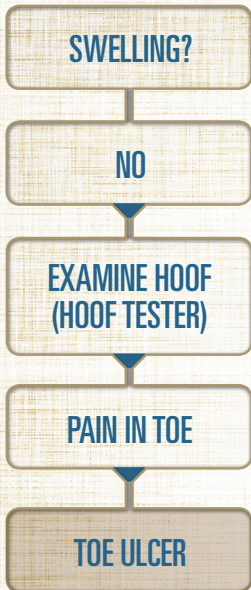


Sole Ulcer Management:

- Left untreated, can lead to sole abscess
- Examine foot and implement proper trimming techniques

Examine Hoof
(pain in sole)

▶ TOE ULCER

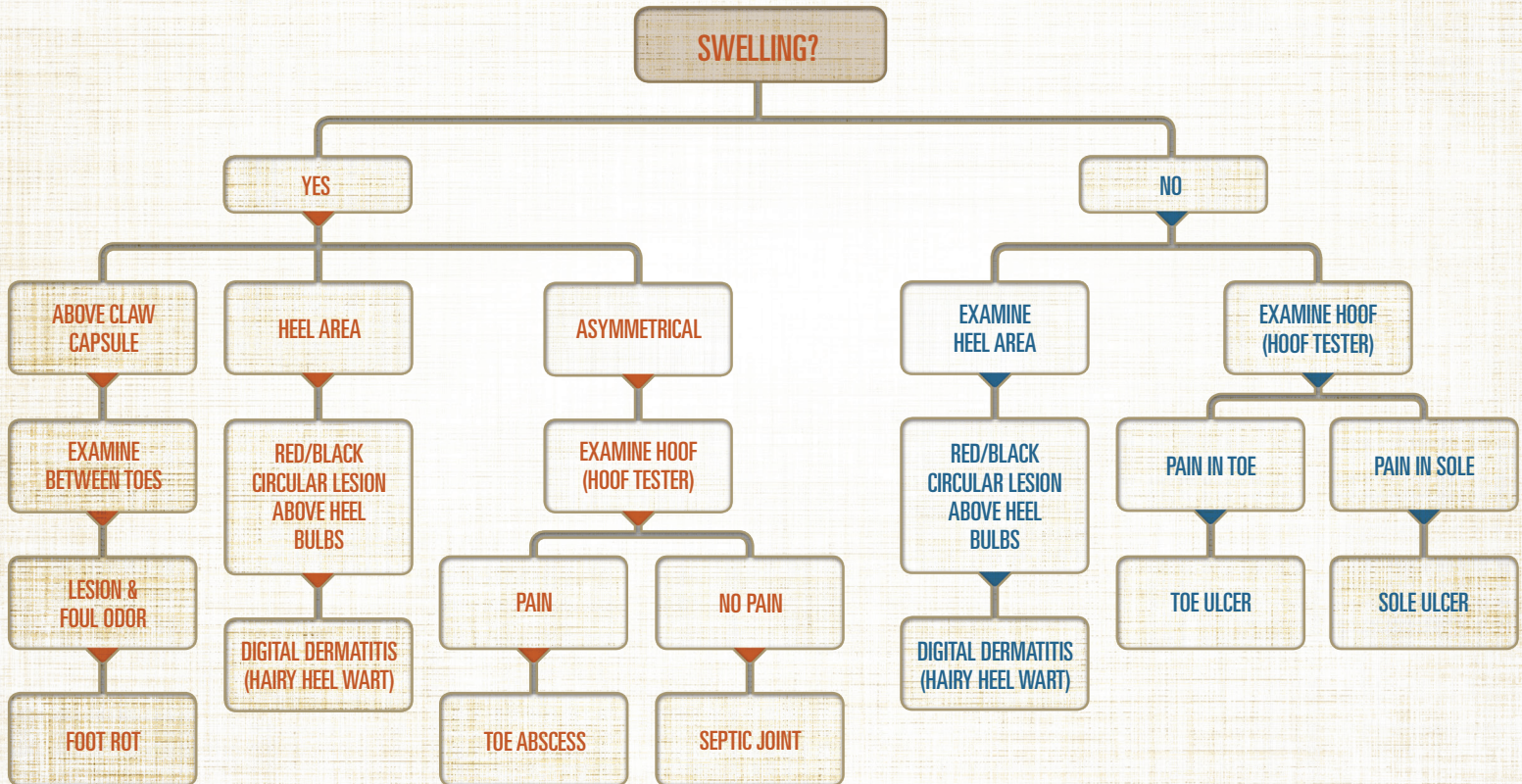


Toe Ulcer Management:

- More likely to occur in new arrivals
- Left untreated, can lead to toe abscess
- Examine foot and implement proper trimming techniques

Examine Hoof
(pain in toe)

▶ SIMPLE DECISION TREE





A COMPREHENSIVE APPROACH TO BEEF CATTLE LAMENESS

The Step-Up™ Management Program was developed by Zinpro Corporation and Kansas State University as the first systematic and comprehensive industry approach to the problem of beef cattle lameness. By proactively identifying and treating lameness – in conjunction with good nutrition, proper facility design, and appropriate animal handling and husbandry practices – the Step-Up Management Program is designed to reduce the prevalence of lameness within the industry, benefitting producer profitability and ultimately reflecting positively on the beef cattle industry.

The importance of nutrition

Producers should consider adding the proper levels of essential trace minerals in beef cattle diets to help maintain a balanced nutrition program. The unique trace minerals found in Zinpro Performance Minerals® are research proven and play a positive role in overall cattle well-being and in reducing lameness.

Visit zinpro.com for more information, including locomotion scoring videos and other reference materials.



BEEF CATTLE INSTITUTE
KANSAS STATE UNIVERSITY

10400 Viking Drive, Suite 240 • Eden Prairie, MN 55344 USA
952.983.4000 • 800.445.6145 • 952.944.2749

zinpro.com



Developed by Zinpro Corporation in conjunction with Kansas State University and the Beef Cattle Institute. ZINPRO®, Performance Minerals® are Step-Up™ are trademarks of Zinpro Corp. ©2014 Zinpro Corp. All rights reserved.

B-5062