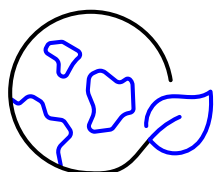




Improving Cow-Calf Productivity Decreases Environmental Impact



Improved Reproduction
and Weaning Weight
Equals

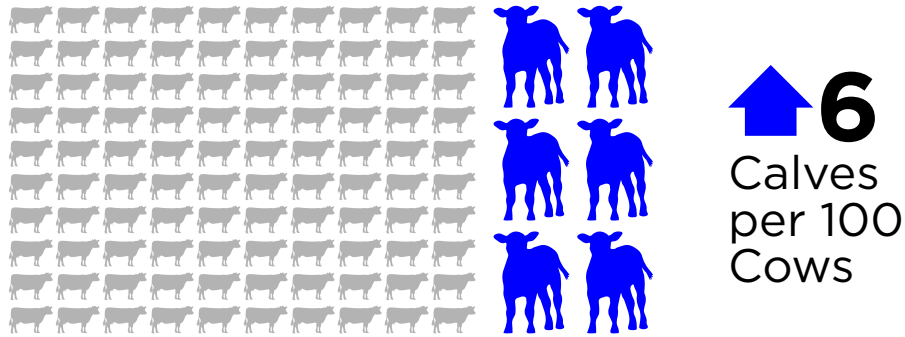
↓ 11%

Methane

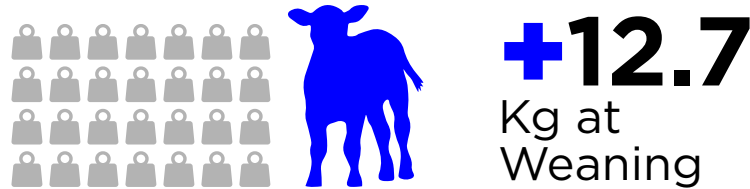
We hear a lot about global warming and the impact livestock production is having on the environment. Some compare cows to cars or even worse, coal. While the headlines may be inaccurate, they do get attention.

Cows are excellent upcyclers, utilizing forages and human inedible byproducts, yet the mitigation of methane remains a top priority. We can improve the carbon footprint of the beef industry, starting with the beef cow, where the bulk of methane emissions originate.

When feeding Zinpro® Availa® 4 to the beef cow in a year-round program, research shows improved reproduction, yielding six additional calves per 100 cows exposed.



Multiple studies have proven that calves from cows fed Zinpro Availa 4 are 12.7 kg heavier at weaning.



Combining these benefits, we have six additional calves per 100 cows, and all the calves are 12.7 kg heavier at weaning. This yields more total weaning weight and revenue from cows fed Zinpro Availa 4.

Ultimately, including Zinpro Availa 4 in your cow-calf nutrition program decreases methane by 11% per kg of weaning weight.

		+ Zinpro
Methane, mg/kg of weaning weight	90.1	80.3
Decrease in methane per kg of weaning weight		9.8
Decrease in methane intensity, %		-10.9

per 1,000 Cows/Year

↓ 11% Methane



For more information: contact your Zinpro sales representative or visit zinpro.com/beef