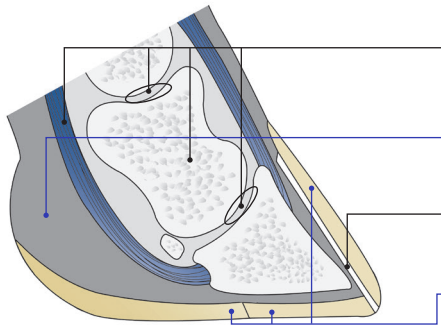


# SWINE LESION SCORING GUIDE



Lesion Description	Toes (T)	Dew Claws (DC)	Heel Overgrowth And Erosion (HOE)	Heel-Sole Crack (HSC)	White Line (WL)	Cracked Wall Horizontal (CWH)	Cracked Wall Vertical (CWV)
1 MILD	 One or more toes slightly longer than normal	 Slightly longer than normal	 Slight overgrowth and/or erosion in soft heel tissue	 Slight separation at the juncture	 Shallow and/or short separation along white line	 Hemorrhage evident, short/shallow horizontal crack in toe wall	 Short/shallow vertical crack in wall
2 MODERATE	 One or more toes significantly longer than normal	 Claws extend to floor surface when the pig is standing	 Numerous cracks with obvious overgrowth and erosion	 Long separation at the juncture	 Long separation along white line	 Long but shallow horizontal crack in toe wall	 Long but shallow vertical crack in wall
3 SEVERE	 Long toes that affect gait when walking	 Claw is torn and/or partially or completely missing	 Large amount of overgrowth and erosion with cracks throughout	 Long and deep separation at the juncture	 Long and deep separation along white line	 Multiple or deep horizontal crack(s) in toe wall	 Multiple or deep vertical crack(s) in wall

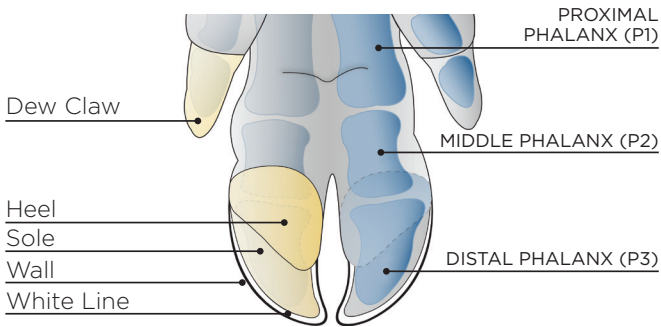
### ESSENTIAL NUTRIENTS FOR BETTER FEET



- Manganese** for joints, tendons and bone density
- Zinc** for corium health and wound healing
- Copper** for connective tissue and white line health
- Zinc/Copper** for sole, heel, and horn strength and elasticity

**Availa® Sow** contains a specific formulation of zinc, manganese and copper to help optimize foot health and lifetime reproductive performance of sows, gilts and boars.

### REAR VIEW OF A PIG'S FOOT



**Produced by the FeetFirst® Team:**  
Dr. J. Deen, Dr. M. Schuttert, Dr. S. van Amstel, Dr. P. Ossent, Dr. R. van Barneveld, Dr. K. Stalder, and Zinpro Corp.

For more information: contact your Zinpro representative or visit [zinpro.com/swine](http://zinpro.com/swine)